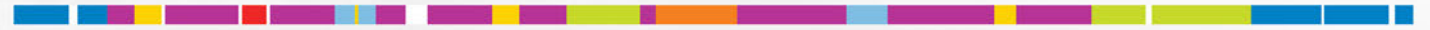




Community Sustainability Program

# CÉU DO MAPIÁ VILLAGE



# AmaGaia Program – Support for Community Sustainability of Céu do Mapiá Village



Associação de Moradores da Vila Céu do Mapiá – AMVCM (Céu do Mapiá Village Neighbors Association)

Grupo de Trabalho Interinstitucional da Vila Céu do Mapiá – GTI (Céu do Mapiá Village Interinstitutional Workgroup)

Igreja do Culto Eclético da Fluente Luz Universal Patrono Sebastião Mota de Melo – ICEFLU (Eclectic Church of the Universal Flowing Light - Patron Sebastião Mota de Melo)

Instituto de Desenvolvimento Ambiental Raimundo Irineu Serra – IDARIS (Environmental Development Institute Raimundo Irineu Serra)

## Credits

First edition: 2019

Editing and Writing: Ana Carolina Simas, Felipe Simas, Júlia Christo, AmaGaia Staff

Photographs: Iberê Périssé, CEDOC/ICEFLU and AmaGaia Collections

Design: Studio Letra | Branca Dardot | Hérika Eustáquia

English version: Eduardo N. B. Simas

## Technical Staff

Universidade Federal de Viçosa - UFV

Instituto Socioambiental de Viçosa - ISAVIÇOSA

Instituto de Economia Solidária - ISES

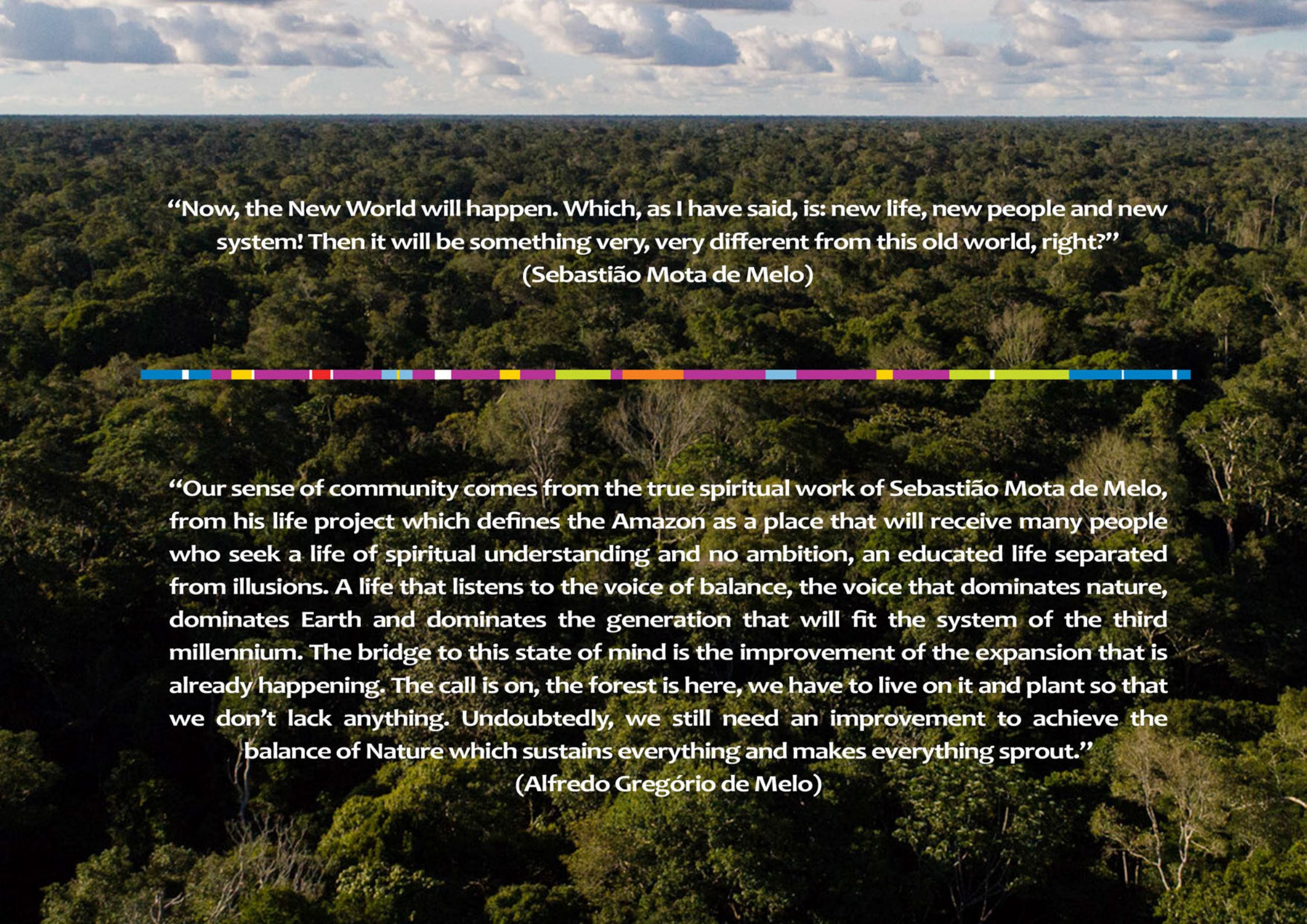
Instituto Dialogação

## Support

Gaia Education

Global Ecovillage Network (GEN)

Instituto Nova Era



**“Now, the New World will happen. Which, as I have said, is: new life, new people and new system! Then it will be something very, very different from this old world, right?”**

**(Sebastião Mota de Melo)**



**“Our sense of community comes from the true spiritual work of Sebastião Mota de Melo, from his life project which defines the Amazon as a place that will receive many people who seek a life of spiritual understanding and no ambition, an educated life separated from illusions. A life that listens to the voice of balance, the voice that dominates nature, dominates Earth and dominates the generation that will fit the system of the third millennium. The bridge to this state of mind is the improvement of the expansion that is already happening. The call is on, the forest is here, we have to live on it and plant so that we don’t lack anything. Undoubtedly, we still need an improvement to achieve the balance of Nature which sustains everything and makes everything sprout.”**

**(Alfredo Gregório de Melo)**

# Summary

CÉU DO MAPIÁ VILLAGE	05
SANTO DAIME: THE DOCTRINE FROM THE FOREST	08
COMMUNITY ORGANIZATION	09
TIME RIVER - CÉU DO MAPIÁ VILLAGE	10
GROUPS AND ORGANIZATIONS OF CÉU DO MAPIÁ VILLAGE	12
AMAGAIA - EDUCATION FOR THE DEVELOPMENT OF ECOVILLAGES	13
AMAGAIA PROGRAM	14
OBJECTIVES, PRINCIPLES, INTEGRATED PLANNING	15
STRATEGIC SUSTAINABILITY PLAN	16
SUSTAINABILITY MANDALA	17
LINES OF ACTION AND STRATEGIC THEMES - SUSTAINABILITY AT CÉU DO MAPIÁ VILLAGE	
Social Dimension of Sustainability	18
Economic Dimension of Sustainability	21
Ecologic Dimension of Sustainability	24
Cultural Dimension of Sustainability	28
PRIORITY COMMUNITY PROJECTS	31
SUPPORT TO COMMUNITY PROJECTS	32
ONGOING COMMUNITY PROJECTS	33
TRANSVERSAL PROJECTS	41
SERVICES OF THE AMAGAIA PROGRAM	42
HOW TO PARTICIPATE AND COLLABORATE	43



# Céu do Mapiá Village

“New world, new people,  
new era, new system”

Vila Céu do Mapiá is an intentional community in the Purus National Forest, a protected area in the southwest of the state of Amazonas, Brazil. Founded in 1983, it is the product of the community work developed since 1974 in the rural area of the city of Rio Branco, in the state of Acre, by a group of rubber tappers and rural workers motivated and united by the spiritual tradition of Santo Daime, and organized under the leadership and inspiring presence of Sebastião Mota de Melo, Padrinho Sebastião (1920-1990).

The community was born with the objective of experiencing human and spiritual development in a new and fair system of community life, in harmony and nourished by the forest, as an experimental alternative of solutions for the current environmental, social, economic and cultural crisis.



With time, this experience attracted people from several other places, enabling a rich social and cultural exchange. Currently, under the leadership of Madrinha Rita Gregório, Padrinho Alfredo Gregório de Melo and Padrinho Valdete Gregório de Melo, Céu do Mapiá, with approximately 600 residents, presents a good level of social organization, with different groups and local organizations that face the challenge of developing creative and sustainable solutions for the Buen Vivir in the biggest forest of the planet.



Both because of the geographic conditions - such as the great isolation of the community - and because of the cultural and socioeconomic profile of its residents, the Village of Céu do Mapiá demands and favors the development of a resilient model of occupation.

The community has favorable conditions for research and implementation of sustainable living alternatives for forest communities based on the local development of appropriate technologies.

# The Mission of Céu do Mapiá Village



“The purpose of Céu do Mapiá Village is spiritual development. It exists to be a healing center. It is the realization of the Doctrine at social (equality, fraternity, community) and ecological (preservation and reforestation) levels.

Céu do Mapiá is a social cell of the Daimista Doctrine, it has in the Village its residence, the headquarters of the Eclectic Center”

“To create a new spiritual life, live together, far from the city and from illusion, because the people will grow”

“To gather the people of Padrinho, to live from natural resources, to plant and unite”

“New life, new time.”

Source: Community Development Plan of Céu do Mapiá Village - PDC, 2004.



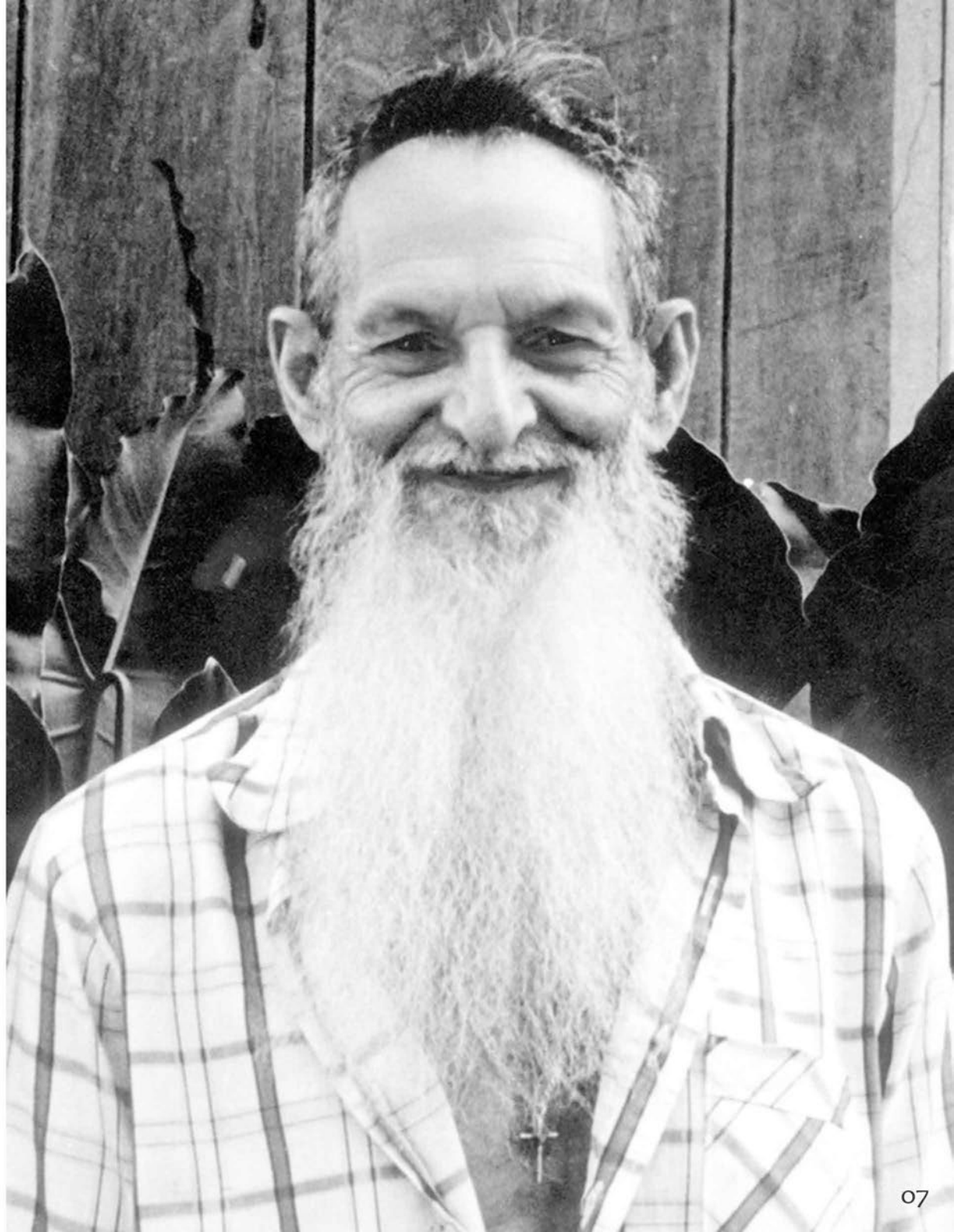
**Location:** Purus National Forest, municipality of Pauini, southwest region of the Amazonas state, Brazil.

**Foundation:** January 21<sup>st</sup>, 1983.

**Area:** 120 ha within the Purus National Forest, with 256.000 ha of mega biodiversity preservation area.

**Population:** Approximately 600 people.

**Community Infrastructure:** Church, Feitio House, Estrelinha, General Kitchen, Flour Houses, School, Kindergarten, Santa Casa de Cura, Health Center, Neighbors Association, Stores, Cooperar, Telecentro, Library, Women Craft House, Forest Medicine Center, Jardim da Natureza, Lua Branca Center for Culture, Sports and Leisure, Music House.



# Santo Daime: The Doctrine of the Forest



The motivation for community life in Céu do Mapiá Village comes from the spiritual practice of Santo Daime, a Christian doctrine based on the ritual use of Ayahuasca: a entheogenic beverage made from a bush and a vine, native of the Amazon Forest, traditionally used by Indigenous people in this part of the forest.

Céu do Mapiá Village is oriented, first of all, to the profound experience of a living spirituality, that acknowledges and celebrates the Divine in the forces and presences of nature - the Sun, the Moon and the Stars, the Earth, the Wind and the Sea - guided by the ethical principles of Harmony, Love, Truth, Justice and Peace, and committed to the objective of a new life and a better world for all.

The Santo Daime Doctrine was founded by Raimundo Irineu Serra (1892-1971), spiritual teacher of Sebastião Mota de Melo.

Mestre Irineu was a slave descendant from Maranhão, who, in the 1920s, went to the state of Acre to work as a rubber tapper and met the beverage with the Indigenous people.

Santo Daime is a religion from the forest, genuinely Brazilian, that brings together elements of Amazonian shamanism, Christian faith, European esoteric knowledge and Afro-Brazilian culture. It is open, inclusive and eclectic, and represents a pacific synthesis of many cultural matrices. The spiritual work of Santo Daime seeks self-consciousness and the experience of God within or the higher inner self.

The ritual use of Ayahuasca is authorized and regulated by Brazilian law. A number of scientific researches show that the use of Ayahuasca can be a healing experience that takes to a higher level of physical and mental well-being.





# Community Organization

In the course of its existence, Céu do Mapiá Village, today with 36 years, went through different organizational stages with some significant milestones.

During the "pioneer" stage of building basic infrastructure and informal agreements, the first main organizations that exist today in the village were created, working on the management and operation of community processes and in the creation and implementation of projects. The Church (ICEFLU), Vila Céu do Mapiá Neighbors Association (AMVCM), local cooperative (Cooperar), the Environmental Development Institute (IDARIS), the School, Santa Casa, Forest Medicine Center, Craft House, are some of the institutions based in Mapiá, which work together to improve life quality and community sustainability.

In link with these organizations, there are also several action groups or community sectors that deal with strategic areas for a good life quality in the forest, such as education, health, food production, community justice, and others.

In 2004, the Céu do Mapiá Village produced its Community Development Plan (PDC), through a participatory process that reinforced the vision and mission of the community, and resulted in the organization of action groups in strategic areas, and in the creation of the Interinstitutional Workgroup (GTI) - the main deliberative sphere of the community, with representatives from the different active organizations of the Village. This process was carried out with the support of the WWF, the Nawa Institute and the Amazon Workers' Center - CTA. In 2009, the Management Plan of the Purus National Forest was approved. It is a technical document that establishes the zoning and norms that should govern the use of the area and the management of natural resources, as well as the implementation of the physical structures necessary for the management of the Purus National Forest. The Management Plan of the Purus National Forest is based on a living systems approach, named The Seed Method, that favors the organic development of the management process.



1971  
Beginning of community works at Colônia Cinco Mil, Rio Branco, under the leadership of Padrinho Sebastião.

1974  
Foundation of the Eclectic Center of the Universal Flowing Light Raimundo Irineu Serra – CEFLURIS, by Padrinho Sebastião Mota de Melo in Rio Branco/AC.

1980  
Moving from Rio do Ouro to the region of the Igarapé Mapiá.

21/01/1983  
Foundation of Céu do Mapiá Village.

1980  
Settlement at Rio do Ouro, state of Amazonas.

1983  
Construction of a new building for the Mother Church of CEFLURIS (current ICEFLU) at Céu do Mapiá Village.

1985  
Creation of the General kitchen and the Estrela House.

1985  
Creation of the Environmental Development Institute Raimundo Irineu Serra – INSTITUTO IDA/CEFLURIS, currently IDARIS.

1985  
Institutional Reform: separation between the religious and administrative spheres. Change in the name of the church to CHURCH OF THE ECLECTIC CULT OF THE UNIVERSAL FLOWING LIGHT PATRON SEBASTIÃO MOTA DE MELO - ICEFLU.

1986  
Creation of the first school in the community.

1986  
Creation of Céu do Mapiá Village Neighbors Association – AMVCM.

1987  
Creation of PURUS NATIONAL FOREST – FLONA Purus by the Brazilian Federal Government.

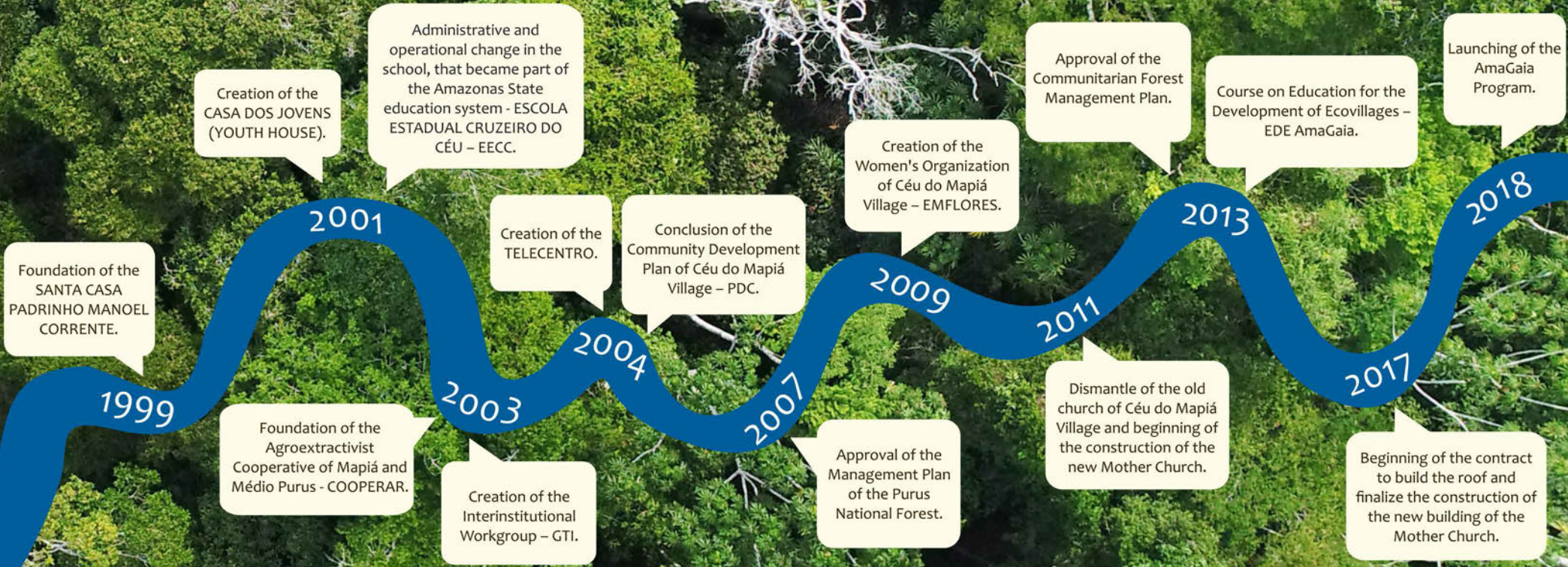
1989  
Foundation of the FOREST MEDICINE CENTER (CENTRO MEDICINA DA FLORESTA – CMF).

1998  
Foundation of the OFICINA ESCOLA JARDIM DA NATUREZA – OEJN.

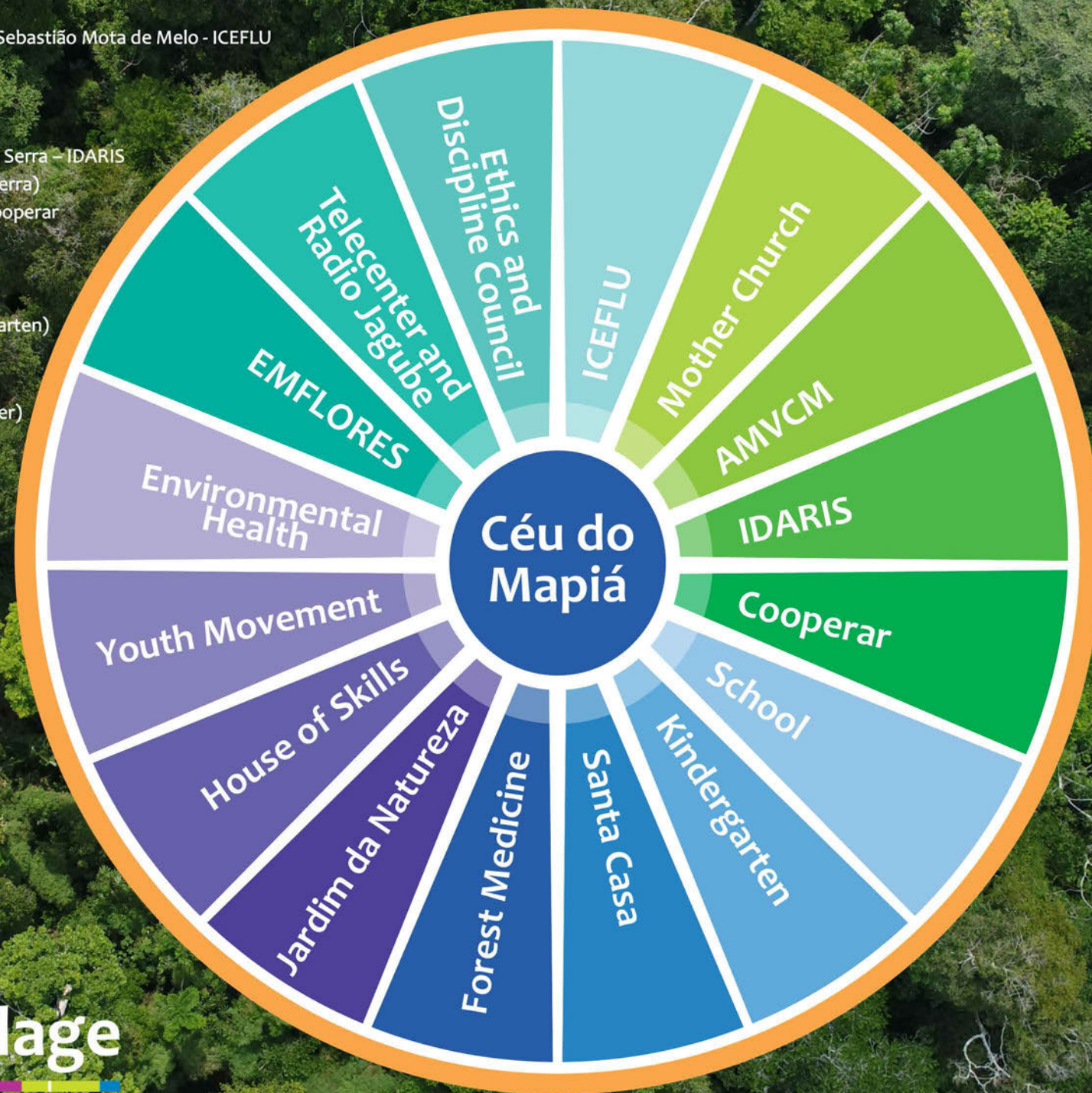
1997  
Creation of the RÁDIO JAGUBE.

1998

# Céu do Mapiá Village



- Igreja do Culto Eclético da Fluente Luz Universal Patrono Sebastião Mota de Melo - ICEFLU
- Mother Church of Céu do Mapiá
- Associação de Moradores da Vila Céu do Mapiá - AMVCM (Céu do Mapiá Village Neighbors Association)
- Instituto de Desenvolvimento Ambiental Raimundo Irineu Serra - IDARIS (Environmental Development Institute Raimundo Irineu Serra)
- Cooperativa Agroextrativista do Mapiá e Médio Purus - Cooperar (Agroextractivist Cooperative of Mapiá and Médio Purus)
- Escola Estadual Cruzeiro do Céu - EECC (Cruzeiro do Céu State School)
- Jardim de Infância Madrinha Rita (Madrinha Rita Kindergarten)
- Santa Casa de Cura Padrinho Manoel Corrente (Holy House of Healing Padrinho Manoel Corrente)
- Centro Medicina da Floresta - CMF (Forest Medicine Center)
- Jardim da Natureza (Nature Garden School of Arts and Crafts)
- Casa de Ofícios Madrinha Tereza Gregório (House of Skills Madrinha Tereza Gregório)
- Movimento dos Jovens (Youth Movement)
- Saúde Ambiental (Environmental Health)
- Movimento de Mulheres da Floresta - EMFLORES (Women of the Forest Movement)
- Telecentro Nova Ideia e Rádio Jagube (New Idea Telecenter and Radio Jagube)
- Conselho Ético-Disciplinar (Ethics and Discipline Council)



# Groups and Organizations of Céu do Mapiá Village



# AmaGaia - Education for the Development of Ecovillages

In 2013, Céu do Mapiá held the AmaGaia, a training and integrated participatory planning process for community sustainability. Based on the curriculum of Ecovillage Design Education (EDE), from Gaia Education, AmaGaia strengthened the connection between Céu do Mapiá Village, the Global Ecovillage Network (GEN) and Gaia Education.

During four weeks, members of the community, together with specialists on the four dimensions of sustainability (social, economic, ecologic and cultural) shared knowledge and information about the key aspects of building sustainable communities, according to local experience and the Ecovillages framework. The community vision for the future was updated and the necessary steps to achieve it were identified. Several other examples, practices and local and external techniques for sustainability in its four dimensions were shared.

Nine workgroups were organized, in link with community sectors. The needs and priorities for each sector were pointed out, along with strategies for their integration and strengthening.



# AmaGaia Program

The AmaGaia Program is a set of actions and coordinated projects that aims to strengthen community sustainability at Céu do Mapiá Village (and other communities linked to ICEFLU), in its four dimensions: social, economic, ecological and cultural, through an integrated ecovillage development approach. The Program is being built with the residents, as a continuation of the community organization process, in partnership with a global network of supporters.

The Program offers support to the creation and collaborative management of local projects - new or already existing - and leveraging for strategic transversal community sustainability projects.

It integrates a transdisciplinary professional group, which comprises a local team, a support team, along with specialized consultants and collaborators. It seeks an ongoing process of social learning, through the exchange of knowledge, experiences, workshops, courses and training.

Ecovillages are rural or urban communities that seek to be part of a social environment of mutual support with a low environmental impact lifestyle. All the four dimensions of sustainability (social, economic, ecologic and cultural) worked in Ecovillages are seen as interdependent and the attention to each one of them is essential to sustainable community development.

Source: Global Ecovillage Network



## Principles

The projects supported by the Program follow the principles of:

- Integral sustainability
- Participatory management
- Transparency
- Responsibility
- Cooperation
- Ethics
- Celebration

## Objectives

All the activities and resources invested by the program aim at the following objectives:

- Support personal growth and good living of all individuals involved;
- Support and strengthen activities that serve the collective Buen Vivir of the community;
- Protect and restore the social, economic, ecologic, and cultural dimensions in the world around us.

## Integrated Planning

All actions of the program observe the following guidelines:

- Engage all parties interested in the actions for a better future;
- Honor the traditional knowledge and welcome positive innovations;
- Learn from nature how to practice systemic thinking;
- Build relationship, collaboration and alliance networks for mutual support;
- Identify the appropriate scale for efficient solutions;
- Find weaknesses, strengths and turning points in the several areas.

Source: Global Ecovillage Network

# Strategic Sustainability Plan

In December 2017, an average of 50 community residents, mostly representatives from the several institutions and organized groups of the Village, gathered in a workshop to, once more, dream together and plan the future of the community.

The main result of this meeting was the harvest of information for the updating of a Strategic Plan for Sustainable Community Development, as a reference to guide the actions and fundraising.

During the workshop, the participants reconnected to the vision of the future for the community and reviewed the orientations and results of the Community Development Plan (PDC) from 2004, and of AmaGaia, from 2013. From there, they updated the strategic themes for community development in the four dimensions of sustainability: social, economic, ecologic and cultural. They also pointed out community projects that are a priority for strengthening and implementation, and the institutions and groups responsible for each project.





# Sustainability Mandala



The sustainability mandala is a map that guides the organization of actions and projects for community good living, integrated in the four dimensions of sustainability. Each dimension covers six principles or action lines that need to be activated.

Source: Global Ecovillage Network (GEN)



# Social Dimension of Sustainability



The social dimension of sustainability in a community refers to the processes and tools of conviviality, living together united, embracing diversity as a richness and working for a common dream and purpose. These are the ways through which the residents build together their vision of future and collective agreements that define the ways they meet, organize, communicate, take decisions, solve conflicts, organize their institutions and leadership models. In the social dimension, special attention must be given to community governance, making clear the roles of each group or sector. To create trust and opening among people and ensure that they feel stronger, seen and heard, are objectives of the actions of this dimension.



## Action Lines

-  To embrace diversity and build prosper communities.
-  To cultivate inclusive and transparent decision making processes.
-  To empower participatory leadership and good governance.
-  To guarantee equal access to holistic education and health care.
-  To exercise conflict management, communication and peace making skills.
-  To develop fair, efficient and reliable institutions.

# Strategic Themes

As indicated by community residents



## To embrace diversity and build prosperous communities:

- Actions that reinforce the Vision of Future;
- Updating of agreements and social pact: Master Plan/Management Agreements;
- Strengthening of the Mutirão (collective voluntary work day) and the General Kitchen;
- Strengthen security;
- Creation of rotational Mutirão;
- Planting;
- Observance of community rules and agreements (for all).



## To cultivate inclusive and transparent decision making processes:

- Training on facilitation of groups and meetings;
- Training on and adoption of decision making methods within community organizations;
- Creation of ways of publicizing and giving transparency to decisions and accountability.



## To empower participatory leadership and good governance:

- Strengthening and revitalization of the GTI;
- Training on project design and management;
- Training on governance methodologies;
- Organizing governance (roles, jobs, meetings, etc);
- Creation of neighborhood councils;
- Formation of new leaders;
- Obedience and respect to commandments.



## To guarantee equal access to holistic education and health care:

### Education

- To strengthen the school and child education - through project based learning, ongoing training for teachers, exchange with democratic and inclusive educators and schools (e.g. José Pacheco), improvements in the infrastructure, political pedagogical project, Gaia in the school;
- Integration of the curriculum to community daily life, strengthening of educational spaces, Living Book, valuing and certifying local/forest knowledge;
- Education for the Doctrine;
- Health education, sex education;
- Creation of the University of the Forest;
- Sustainable/Environmental Education;
- Education centered on agriculture, school garden, Roçadão, Agricultural School, Technical Education;
- Implantation of classrooms in neighborhoods and localities.

### Health

- Organization of a system of ongoing and integrated medical care in the community;
- Unification of a health system within the community. Community health insurance;
- Reform and activation of the Health Center, labs and equipment, health boats; Strengthening of the Santa Casa; creation of the forest hospital and birth center;
- Strengthening of the Forest Medicine Center;
- Encouragement of the use of herbal and forest medicines, strengthening of traditional knowledge;
- Strengthening of the Health Council;
- Health campaigns with a focus on the prevention, nutrition and food quality;
- Telemedicine (network of doctors of the brotherhood);
- Emergency Health Fund.



## To exercise conflict management, communication and peace making skills:

- Strengthening of the Ethic and Discipline Council and the community security team;
- Strengthening of Restorative Community Justice;
- Strengthening of Community Communication (Radio Jagube, Jagube Channel, Graphic, Community Newspaper, radio-communication systems, Telecenter/internet, etc.);



## To develop fair, efficient and reliable institutions:

- Strengthening of the Neighbors Association;
- Strengthening of the Cooperar and inclusion of new members;
- Strengthening of ICEFLU;
- Strengthening of IDARIS;
- Advocacy support to institutions;
- Access to public policies;
- Accountability in all institutions;
- Associative contribution.







# Economic Dimension of Sustainability



Within communities, the economic dimension aims to build economic practices and systems that contribute to share resources, mutual support and strong local economies and networks that answer to the needs of populations and ecosystems. The economic practices should provide sustainable alternatives to the hegemonic economy and to the monetary system, and restore ways of thinking about wealth and progress that include every aspect of life. The main guideline is re-localization, the strengthening of productive chains and exchanges in the bioregion, and the respect for planetary limits. Local currency, sharing, social entrepreneurship, circular economy and collaborative property models are key to this dimension.



## Action Lines

-  To work for equality in the property of land and resources.
-  To rebuild the concept of prosperity, work, and progress.
-  To generate well-being to all through economic justice.
-  To nourish social entrepreneurship to create sustainable solutions.
-  To empower and strengthen local economies.
-  To invest on fair and ethical systems of trade and exchange.

# Strategic Themes

As indicated by community residents



## To work for equality in the property of land and resources:

- Dealing with land issues;
- Creation of a team capable of managing whatever is agreed by the community;
- Encourage exchanges between residents.



## To rebuild the concept of prosperity, work, and progress:

- Support to fundraising;
- Education on economy and management;
- Appreciation of the culture and lifestyle from the forest (to pass it on to the next generations);
- Rebuilding of the understanding and practice of charity;
- Strengthening of the community collective work (mutirão): 18:00 prayer on Sundays, with meeting and mobilization for the mutirão; participation of the Cruzeiro do Céu School in the mutirão; restore the leaders of the sectors of the mutirão.



## To generate well being to all through economic justice:

- Strengthening and organization of social assistance;
- Strengthening and enlargement of the activities of the General Kitchen;
- Technical training;
- Generation of equal opportunities;
- Environmental Health Movement in action.



## To nourish social entrepreneurship to create sustainable solutions:

- Incubation of local enterprises (e.g. soap, fish farm, fibers, lines, pigments, oils, medicines, wood, crafts, etc.);
- Organization of visitation;
- Organization of the transport sector (e.g. community canoes, improvement of the harbor, etc);
- Strengthening and expansion of the Women Craft House;
- Creation of a brand to name and guarantee the goods produced and/or manufactured in Mapiá;
- Strengthening of ecological, community, and spiritual tourism;
- Encouragement of production;
- Strengthening of the Community Forest Management for timber or non timber products, strengthening of the wood productive chain (sawmills, carpentry, vocational courses);
- Encouragement of the ecotourism activities for visitors during festivals;
- Creation of a microcredit system;
- Organization of vocational courses on cooking;
- Strengthening of the Jardim da Natureza, improvement of the production workshops and of the infrastructure.



## To empower and strengthen local economies:

- Create a Community bank;
- Implement local currency;
- Create a directory/catalog of products and services;
- Learn about and maybe use internal economy structures and e-commerce;
- Build the road to Purus;
- Aid on the flow of local products (CMF, Jardim da Natureza, etc);
- Open shops or e-commerce.



## To invest on fair and ethical systems of trade and exchange:

- Organization of exchange markets and networks;
- Organize the House of the Producer and distribution of local products;
- Creation and implementation of complementary economic systems (LETS, exchanges, hour banks, etc);
- Organize a market of local products.







# Ecological Dimension of Sustainability



In the ecological dimension of sustainability, special attention is given to the integration of the human being to the rest of nature, as a way of increasing biodiversity and restore ecosystems, and giving people the opportunity to experience in direct, the interdependency with all systems and life cycles daily. In the ecologic dimension, actions focus on the integrated design and implementation of solution and closed cycles for food production, ecological construction, care with water, renewable energies, reduction and proper management of waste and environmental protection, in a creative way, with respect and synergy with nature's cycles.



## Action Lines

-  To clean and restore the water cycle.
-  To seek the use of 100% of renewable energy.
-  To cultivate food and the soil through agroecology.
-  To innovate and spread technologies of ecological building.
-  To treat waste as a valuable resource.
-  To restore ecosystems and ensure biodiversity.



# Strategic Themes

As indicated by community residents



## To clean and restore the water cycle:

- Encourage the use of biodegradable products (soaps, packages, cleaning products, even for dogs);
- Attention with waste and oil in the igarapé;
- Ecological basic sanitation (physical and biological treatment of black and gray waters);
- Mapping, protection and recuperation of water sources, igarapé and riparian forests;
- Increase the use of rainwater;
- End of the dumping ground to preserve the water sources;
- Strengthening of environmental education;
- Encourage the use of local ecologic soap;
- Attention regarding septic tanks (far from water fountains).



## To seek the use of 100% of renewable energy:

- Experimental demonstration projects;
- Diversity of energy sources;
- Solar systems without panels: Sterling motor, water pump, solar oven and stove;
- Biodigestor;
- Biomass plant - gasifier;
- Light for All (solar panels);
- Biodiesel and ethanol for engines;
- Bikemachines;
- Training of local workers;
- Agreement about the functioning of engines;
- Encourage the knowledge on renewable energies at Cruzeiro do Céu School.



## To cultivate food and the soil through agroecology:

- Create and manage seed banks;
- Community initiatives: gardens, ponds, stores;
- Management of livestock raising in harmony with the environment and in an integrated manner;
- To form a new generation of farmers; engage children and young people in farming;
- Stimulate research and use of local food;
- Soil improvement;
- Strengthen and create agroforests;
- Strengthen agroecological practices;
- Restore and strengthen traditional practices;
- Encourage farming and production in the neighborhoods;
- Plant and manage fruit trees;
- Market and exchange of seeds and seedlings between residents;
- Strengthen beach farming;
- Training and funding;
- Food for the school coming from family farming.



## To innovate and spread technologies of ecological building:

- Pilot-building for demonstration;
- Adaptation of community buildings as examples;
- Create ways to encourage ecological construction;
- Training and research on local materials;
- Brick factory (bricks and soil-cement);
- Renovation, maintenance and construction of bridges;
- Sawmill;
- Improve paths and build bike paths;
- Follow and propose ecological solutions for the construction of the Church;
- Carpentry;
- Training on ecological construction.



### To treat waste as a valuable resource:

- Education on waste (rethink, reduce, reuse, recycle, destination);
- Landfill;
- Reactivation and strengthening of the Environmental Health project;
- Elaboration of the Solid Waste Management Plan;
- Attention with the waste from used batteries/panels;
- Maximum reduction of waste (plastic)
- Treatment of organic waste (EM and compost, biodigestor)



### To restore ecosystems and ensure biodiversity:

- Create reserves in the neighborhoods;
- Observance of environmental laws;
- Projects for the protection of domestic animals;
- Environmental education (trails, campaigns for the appreciation of nature);
- Integration, following and renewal of the Management Plan of the FLONA.







# Cultural Dimension of Sustainability



The cultural dimension of sustainability in communities aims to build, reinforce or restore a diversity of cultures and world visions, that support people to feel deeply connected to themselves, with others and with nature as a whole, through practices of spirituality and self development. In the spiritual dimension, the development of ways to respect and support life and beings and systems that support it are encouraged, through the ecology of knowledges, the strengthening of local and traditional cultures, and the dialogue between tradition and modern science. Celebration, art, dance and other ways of creative expressions are considered fundamental to the prosperity of life and of human communities.

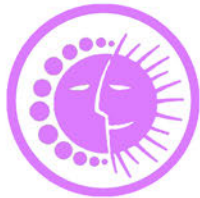


## Action Lines

-  To respect cultural traditions that support human dignity.
-  To engage actively in the protection of communities and nature.
-  To celebrate life and diversity through art.
-  To reconnect with nature and adopt a low-impact lifestyle.
-  To connect to a higher life purpose.
-  To nourish full attention and personal growth.

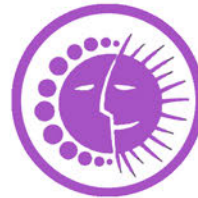
# Strategic Themes

As indicated by community residents



## To respect cultural traditions that support human dignity:

- Alliances and exchanges with Indigenous people;
- Encourage the interest for regional culture: exchanges with cultural manifestation "from the roots";
- Investment on and strengthening of existing knowledge (local, traditional);
- Restore the canoe making;
- Value the strengthening of the culture of the forest.



## To engage actively in the protection of communities and nature:

- Environmental Health recycling workshops;
- Security and monitoring at the entrance of the FLONA;
- Pressure over responsible authorities (federal, state and city governments and ICMBio) on the issue of security;
- Implementation of the Purus FLONA Management Plan.



## To celebrate life and diversity through art:

- Lua Branca Center for Culture, Sports and Leisure;
- Strengthening and enlargement of the Jardim da Natureza;
- Music School;
- Capoeira;
- Consolidate the Mapiá Orchestra;
- Activation of the Telecenter New Idea as a Culture Spot;
- Library;
- Universal internet access;
- Activation of the Cultural Center at Jardim da Natureza;
- Community Museum;
- Theater, dance, cinema;
- Sports gym;
- Radio and Channel Jagube.



## To reconnect with nature and adopt a low-impact lifestyle:

- Strengthening of the Forest Medicine Center;
- Experience nature: environmental education and deep ecology for children, young people and adults.
- Trails, birdwatch;
- Arborism and other sports;
- Research and practice of traditional cooking and technical courses at the General Kitchen.



## To connect to a higher life purpose;

- Strengthening of the spiritual works;
- Strengthening of the “fiscalização”;
- Building of the Church;
- Building of the new Feitio House (according to ANVISA rules);
- Encourage the spiritual works of children, youth, men and women.



## To nourish full attention and personal growth:

- Promote regular rehearsals;
- Doctrinaire training;
- Restore the study of hymns at the school;
- Mental health;
- Yoga and other therapies;
- Therapeutic and biotherapeutic courses;
- Realization of circles of women and of men, and work on gender issues.

# Priority Community Projects

All projects supported by the AmaGaia Program have the objective of activating and strengthening actions that take hold of the strategic themes selected by the community in the four dimensions of sustainability.

- Master Plan
- Strengthening of the Neighbors Association
- Access to Public Policies;
- General Kitchen
- Strengthening of the mutirão
- Infrastructure: new harbor, reception, revitalization of the square, paths, roads, new AMVCM building.
- Finalization of the Church and New House of Feitio
- Purus Road
- Bioconstruction
- Energy
- Security
- Community plantation and Flour House
- Forest Medicine
- Jardim da Natureza
- Telecenter
- Saúde Ambiental - Environmental Health
- Lua Branca Center for Culture, Sports and Leisure
- Canal Jagube (Jagube Channel)
- Music House/School
- Study of the Doctrine at School
- Community Forest Management
- Luthier and carpentry
- Production of biocosmetics and cleaning products
- Print shop
- Fish farm
- Canoe Making
- Enterprise for Mapiá
- Pilot course of the University of the Forest
- Sol Network
- Hostel
- Food Sovereignty, House of Producer, Producer's Market
- Health: strengthen the Santa Casa, reform Health Center, Telemedicine



# Support of Community Projects



The AmaGaia Program provides different kinds of support to community projects, according to the stage of each project.

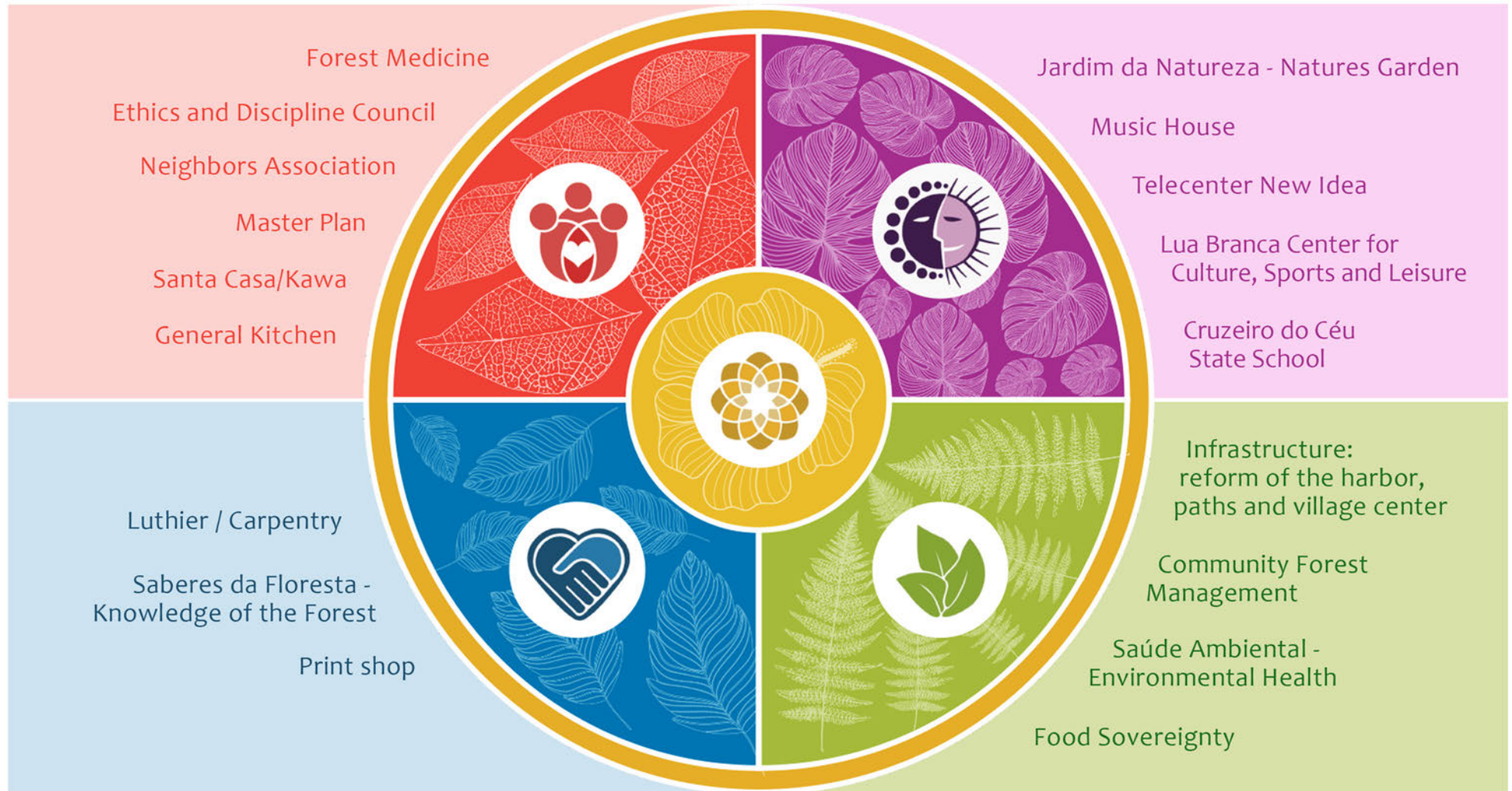
Our flow for project design takes into account three steps in each of the four main stages: Dream, Plan, Do and Celebrate.



Source: adapted from the Dragon Dreaming Project Design approach



# Ongoing Community Projects





## MASTER PLAN

The participatory elaboration of the Master Plan of the Céu do Mapiá Village is a very important step and an essential milestone in the current stage of community organization. The Master Plan is a tool to define community agreements and use of the space, of conviviality, of visiting, residency and other vital issues for the social health of the community.

### Objectives of this cycle

Promote a participatory process for the making and renewal of social agreements, rules of conduct and for the use and parceling of community land.



## NEIGHBORS ASSOCIATION

The Neighbors Association of Céu do Mapiá Village (AMVCM) was founded in 1987, and is responsible for the general organization of the community, reception of visitors, weekly mutirão and several important areas of community life.

### Objectives of this cycle

Institutional and associative strengthening, which includes the registration of residents, update of conviviality agreements and rules of the house, strengthening of the mutirão and other actions which are part of the board's strategic plan and community management.



## GENERAL KITCHEN

The General Kitchen is in charge of community meals for residents, visitors and workers of Céu do Mapiá Village. It is a very important meeting point for the community.

### Objectives of this cycle

Strengthen the organization and functioning of the General Kitchen, with a focus on professional training, support to cooperative management and income raising, waste management, ecologic sanitation and production of sustainable energy.



## INFRASTRUCTURE

The Céu do Mapiá Village center square is the place of welcome, meeting, work and leisure of the community, where are located the General Kitchen, Neighbors Association headquarters, several shops and other important structures of community life. It is also the main harbor of the Village and crossing point of the many paths coming from the several neighborhoods of the community.

### Objectives of this cycle

Build a new arrival harbor for the Village, with adequate structure to host a reception, visitor's center and small shops. Also doing the renovation of the square, roads and paths, and making a new building for the Neighbors Association.



## CENTRO MEDICINA DA FLORESTA (FOREST MEDICINE CENTER)

The Forest Medicine Center (CMF) is a non-governmental organization founded in the community. The CMF works as a center for research, systematization and publicizing of traditional knowledge on medicines of the forest, with the object of advancing integral human health.

### Objectives of this cycle

Activate for a year educational and productive activities of the CMF-School, engaging ten young apprentice, material, food and support for instructors.



## JARDIM DA NATUREZA

The School of Arts and Skills of the Jardim da Natureza offers educational activities and production of arts and crafts, specially with materials from the forest, and the exchange and strengthening of local knowledge for children, young people and adults of the community.

### Objectives of this cycle

To maintain for a year the weekly workshops in different modalities of crafts and cooking, offering 10 scholarships for young apprentices and support for the tutors, maintenance, cook and materials. In addition to that, the reform and enlargement of the support structures.



## SANTA CASA AND KAWA

The Santa Casa de Cura Padrinho Manoel Corrente is an initiative for health care, created to help people who need spiritual, mental and physical healing. It offers free service to the community in cases of hospitalization, child birth, clinic, consultation and social assistance. It is dedicated to the study, research and use of forest therapies to achieve cure.

### Objectives of this cycle

Reform and equipment of the current building and remuneration of staff for care. Creation of a healing center and community garden on the field in front of the Santa Casa. Support to the work of Kawa, of oil extraction and production of biocosmetics.



## SABERES DA FLORESTA (KNOWLEDGE OF THE FOREST)

The project is an initiative of a group of women, residents of the community who seek economic alternatives and solidarity and sustainable environmental actions through the production of ecological toiletries and cleaning products (soap, creams, deodorant and essential oils).

### Objectives of this cycle

Increase and improve the production of soap, detergent, creams and cleaning products. Offer workshops for young apprentices.



## CRUZEIRO DO CÉU SCHOOL

The Cruzeiro do Céu School was created in 1986 as a community initiative of the residents of the Céu do Mapiá Village. In 2001, the school was integrated to the public system of the state of Amazonas and, since then, is called Escola Estadual Cruzeiro do Céu. The school serves today around 250 students, distributed in Primary School, High School and Adults and Youth Education.

### Objectives of this cycle

Improve the infrastructure and thermal comfort, strengthen pedagogical projects and promote training and exchanges for educators.



## LUA BRANCA CENTER FOR CULTURE, SPORT AND LEISURE

This movement promotes the integration of young people through cultural activities, such as the Cipó de Ouro Academy (Classes of Capoeira, Maculelê and Puxada de Rede), theater, film exhibition and others. As the Céu do Mapiá Village is an isolated community, offering healthy activities for the youth is a pillar of community development.

### Objectives of this cycle

Train local Capoeira instructors to continue with regular classes specially for young people and children of the community. Enlarge the infrastructure of the academy to host other cultural activities and also to improve and put a fence around the field and its surroundings to host an open space for leisure and sports practice, including a children's playground.



## SAÚDE AMBIENTAL (ENVIRONMENTAL HEALTH)

This movement began with the creation of a workgroup during the process of elaboration of the Community Development Plan, in 2004. It has been responsible for the selective collection in 90% of the houses of the Céu do Mapiá Village. The dry and clean waste is kept and used for the production of recycled crafts, in regular workshops for children, youth and adults. The Céu do Mapiá Village is like an island in the middle of the forest, and there is no support from the state for the collection or correct destination of solid waste, what makes the Environmental Health a strategic movement for community well-being.

### Objectives of this cycle

Construction of the warehouse for the selection of waste and environmental education activities (workshops, recycling, etc). Installation of an area of agroforestry system and demonstration of other ecological solutions (compost, efficient microorganisms, ecological sanitation, etc.). It also aims the construction of a new space for the stocking of selected solid waste, as well as the acquisition of a press for its compaction.



## TELECENTER AND RADIO JAGUBE

The New Idea Telecenter offers free access to internet for the residents and visitors of Céu do Mapiá Village. It hosts also the Radio Jagube - created in 1998 by Lucio Mortimer - and the Mario Rogério Community Library.

### Objectives of this cycle

Reform the infrastructure of the Telecenter. Promote its renovation as a space of education and digital inclusion, widening the appropriation of means of information, communication, technologies and cultural production by the population of Mapiá, through free wifi and closed signal, reactivation of radio broadcasts, public access to the audio and video collection of the Telecenter and the library, real time or recorded broadcast of hinários.



## MUSIC HOUSE

The Music House is a project led by Madrinha Júlia Chagas da Silva, and offers a space for music classes, rehearsals, children's works and other activities.

### Objectives of this cycle

Finish the construction of the Music House initiated by Madrinha Julia to be a space for classes and musical rehearsals, specially on the hinários of the Doctrine.



## ETHICS AND DISCIPLINE COUNCIL

The Ethics and Discipline Council is responsible for keeping the order and observance of laws and community agreements, and for managing conflicts in Céu do Mapiá Village.

### Objectives of this cycle

To give conditions for the well-functioning of the CED, through training and organization of activities. In this sense, the project points out the need for an Executive Coordinator and community agents who act in the field of monitoring and maintenance of the order and agreements. The project seeks also the training of CED members and other residents on Restorative Justice.



## LUTHIER / CARPENTRY

An old dream of residents of the Céu do Mapiá Village, carpentry and luthier are two integrated community enterprises, linked to the wood productive chain, with a great potential of generating work and income for the residents, specially for the youth.

### Objectives of this cycle

Structuring and reactivation of Saint Joseph House of Skills, with new machinery. Training on the fabrication of instruments – luthier. Organization of the production of small wooden objects



## PRINT SHOP

The Print shop seeks to support the production of materials for the Church and other community sectors, being also a social enterprise for income generation.

### Objectives of this cycle

To locally produce printed material of support for educational and cultural activities, and for the Church, and also offer services for the community.



## COMMUNITY FOREST MANAGEMENT

Community Forest Management seeks the sustainable exploitation of wood and other forest products, and is an economic activity with a great potential of generating income and internal circulation of resources in Céu do Mapiá Village, involving different productive chains.

### Objectives of this cycle

Implementation of the Community Timber Forest Management Plan, having COOPERAR as beneficiary. Emission of the Exploitation Authorization (Autex) by ICMBio. Realization of the first wood harvest. Delimitation and inventory of Yearly Production Unit 2. Construction of greenhouses to dry and stock the wood. Training of the group of managers on operational and administrative activities. Definition of the forestry enterprise governance processes. Technical support to the forest management activities.



## FOOD SOVEREIGNTY

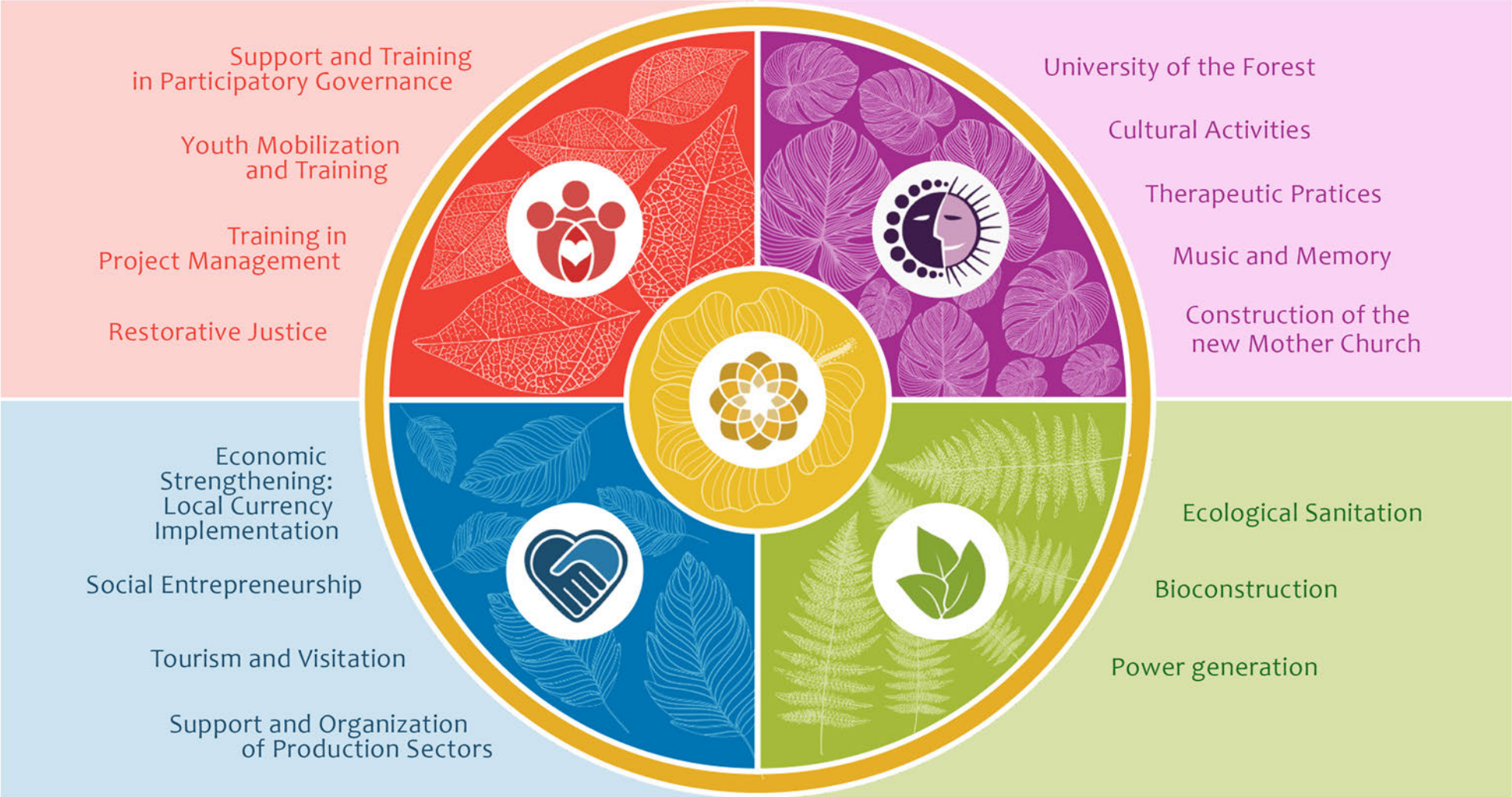
The farming vocation of Céu do Mapiá Village comes from its foundation by extractivists and family farmers, and from the great support given by Padrinho Sebastião and other pioneers, such as Padrinho Nel, who initiated, in the Purus river banks (Prainha), the work to increase local food production. In the course of time, other experiences were developed regarding river bank plantations and agroforestry systems, such as the projects developed at Fazenda São Sebastião, Pólo da Cachoeira and São Pedro beach. Due to the geographic isolation of the Village, strengthening food production is essential for community sustainability. The focus of this project is the creation of a food sovereignty program based on past experiences and on the strengthening of local production in home gardens, plantation fields, agroforests, agrobaches and the strengthening of the existing production centers.

### Objectives of this cycle

Strengthen the organization of the group of farmers and offer technical agroecological support for the production, processing and commercialization of food. Implement productive demonstrative units and hold training actions on the subject. Create a microcredit system based on solidarity economy.



# Transversal Projects



# Services of the AmaGaia Program



- Organizing knowledge exchanges, courses, workshops and experiences in the four dimensions of sustainability. Strengthening local knowledge and increasing possibilities through external contributions, aiming a transformative learning, according to local needs.
- Focus on the strengthening of local and strategic projects, and in opportunities for young people.
- Establish partnerships with universities, school and groups connected to educational practices which seek transition to sustainability.

- Facilitate integrated participatory planning processes for community sustainability, and support articulation between the different projects for the optimization of actions and resources.

- Support local groups on strengthening, creation and/or development of collaborative projects for community sustainability.
- Launching the call for community definition of priority projects.
- Facilitate the creation and planning of projects linking the four dimensions of sustainability.
- Follow up and assistance throughout the stages of Dreaming, Planning, Doing and Celebrating.
- Support for fundraising strategies and assistance to the financial management of projects.
- Development of strategies for projects sustainability.
- Support for the integration and synergy among resources that flow through community projects.
- Focus on mobilization, strengthening and youth integration.



- Links and alliances with networks, organizations, groups and movements of reference in the implementation of regenerative solutions of transition to sustainability in the whole world.
- Promotion of exchanges and partnership.
- Connection with Céu do Mapiá support network to integrate knowledge and resources for the community sustainability.

- Articulation between community demands and technical support for the development of transversal projects that activate strategic areas in each of the four dimensions of sustainability in the community.

## How to Participate and Collaborate

**There are many ways to collaborate with the AmaGaia Program:**

Making financial donations

Publicizing our fundraising campaigns

Giving technical and professional support

Bridging partnerships

Volunteering



**Do you wish to take part and engage with this movement?**

**Get in touch with the AmaGaia team!**

### LINKS:



[programa.amagaia@gmail.com](mailto:programa.amagaia@gmail.com)



[facebook.com/AmagaiaFlorestaNacionalDoPurus](https://facebook.com/AmagaiaFlorestaNacionalDoPurus)



Community Sustainability Program of  
**CÉU DO MAPIÁ VILLAGE**



Support:

